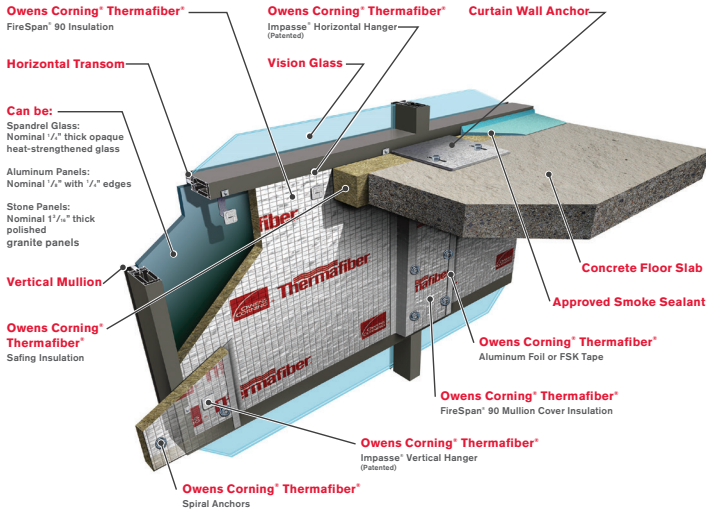




Thermafiber® Impasse® System



Description

Thermafiber® Impasse® Curtain Wall Perimeter Fire Containment System is a patented design that streamlines the installation of curtain wall insulation by changing the order of traditional installation steps to fit a logical progression and take full advantage of the fire resistive, enhanced acoustical performance, and vapor barrier properties of Thermafiber® FireSpan® and Safing insulations. Traditional curtain wall insulation systems call for installation of impaling pins on spandrel panels before installation of insulation. The insulation is then impaled onto the pins. The Thermafiber® Impasse® System is unique in that the hangers are inserted into the insulation before the insulation is installed into the panels. This technique saves time and money. The Impasse® system is tested and rated with UL® laboratories and provides up to 3* hours of fire containment.

*See individual listings for hourly F rating.

Perimeter Fire Containment Systems

| UL® Approved Designs per ASTM E 2307 | | | |
|--------------------------------------|-----------|-----------|-----------|
| CW-D-1014 | CW-D-1021 | CW-D-2046 | CW-D-2052 |
| CW-D-1015 | CW-D-1022 | CW-D-2047 | CW-D-2055 |
| CW-D-1016 | CW-D-2039 | CW-D-2048 | CW-S-2058 |
| CW-D-1017 | CW-D-2040 | CW-D-2049 | CW-S-2059 |
| CW-D-1020 | CW-D-2041 | CW-D-2051 | |

For additional job specific details and accessory materials necessary to complete the Perimeter Fire Containment System, please refer to UL® design listing.¹

¹ Underwriters Laboratories (UL) Designs, Fire Resistance Directory, UL, 333 Pflugsten Road, Northbrook, IL 60062.

See Owens Corning publication "Enclosure Solutions Perimeter Fire Containment System E2307 Curtain Wall Technical Bulletin" (Pub. No. 10020920) for more information.

Product Options

- Impasse® Hangers, vertical and horizontal
- Impasse® Locking Washers
- Spiral Anchors
- FireSpan® 90 Insulation
- Safing Insulation

Availability

| Product | | Sizes |
|--|--|--|
| Impasse® Vertical Hanger** | | 2" – 5" 1/2" increments |
| Impasse® Horizontal Hanger** | | 2" – 5" 1/2" increments |
| Impasse® Locking Washers | | 1 size |
| 2 3/4" Spiral Anchor*** (used w/ 1" thick mullion covers) | | 500, 1000, or 2000 pieces per carton |
| 3 3/4" Spiral Anchor*** (used w/ 2" thick mullion covers) | | 500, 1000, or 2000 pieces per carton |

** Hanger Size = insulation thickness. Custom sizes and designs are available upon request.

*** Spiral Anchors should be at least 1 3/4" longer than the thickness of the mullion cover.

Thermafiber Insolutions®

Thermafiber Insolutions® offers industry leading technical and engineering assistance to architects, specifiers, and contractors. These services include CAD drawings, engineering judgments, LEED® Credit Information, and product recommendations. Contact our technical services department at 1-888-834-2371 or email ThermafiberInsolutions@owenscorning.com.

Features

- Provides up to 3* hours of fire containment in curtain wall systems
- Patented design
- Saves time and money over traditional jobsite installation methods
- Great for factory installing curtain wall insulation
- Designed for easy installation
- Requires installation of fewer mechanical attachments
- UL® approved and listed system

Environmental and Sustainability

Owens Corning is a worldwide leader in building material systems, insulation and composite solutions, delivering a broad range of high quality products and services. Owens Corning is committed to driving sustainability by delivering solutions, transforming markets and enhancing lives. More information can be found at www.owenscorning.com.

Submittal Approvals

Job Name _____
Contractor _____
Date _____



The Thermafiber® Impasse® Insulation Hanger System was used to install various Thermafiber® mineral wool products in the perimeter fire containment system at 353 N. Clark in Chicago, IL. Thermafiber® mineral wool insulation contributed to this building's LEED® Gold status.



Made in the USA

Certifications and Sustainable Features

- ²Verified by ICC-ES to contain a minimum of 70% recycled content. See ICC-ES Evaluation Report VAR-1025 at icc-es.org.
- Environmental Product Declaration (EPD) has been certified by UL Environment. For more information visit ul.com/epd.
- Material Health Certificate from Cradle to Cradle Products Innovation Institute. For more information visit c2ccertified.org.
- This product receives SAFETY Act designation by the U.S. department of Homeland Security. For more information visit safetyact.gov.



Disclaimer of Liability

Thermafiber, Inc. shall not be liable for incidental and consequential damages, directly or indirectly sustained, nor for any loss caused by application of these goods not in accordance with current printed instructions or for other than the intended use. Thermafiber, Inc. liability is expressly limited to replacement of defective goods. Any claim shall be deemed waived unless made in writing within thirty (30) days from date it was or reasonably should have been discovered.

LEED® is a registered trademark of the U.S. Green Building Council.
Green Globes® is a registered trademark of Green Building Initiative, Inc.
UL and the UL logo are trademarks of UL LLC.

INTERTEK and the Intertek logo are registered trademarks of Intertek Group plc.



THERMAFIBER, INC.
ONE OWENS CORNING PARKWAY
TOLEDO, OHIO, USA 43659

888-TFIBER1 [834-2371]
www.thermafiber.com

Pub. No. 10021131-A. Printed in U.S.A. December 2017.
THE PINK PANTHER™ & © 1964–2017 Metro-Goldwyn-Mayer Studios Inc.
All Rights Reserved. The color PINK is a registered trademark of Owens Corning.
© 2017 Owens Corning. All Rights Reserved. © 2017 Thermafiber, Inc.
All Rights Reserved.

